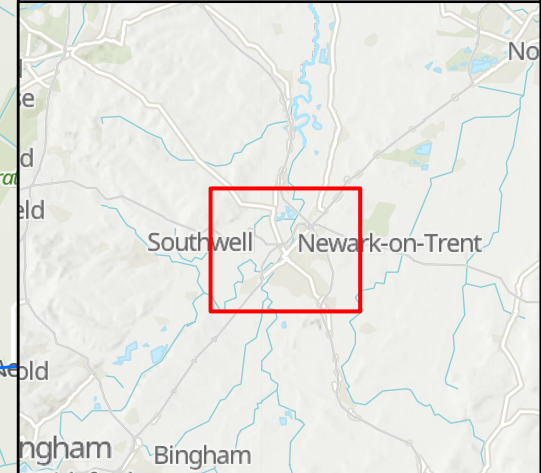


NOTES
 Source
 Air Quality monitoring locations supplied by National Highways (2022) and Newark and Sherwood District Council (2023). Traffic data created by Mott MacDonald 2023.
 Service Layer Credits
 Contains OS data © Crown Copyright and database right 2023
 Contains data from OS Zoomstack

- KEY TO SYMBOLS**
- Order Limits
 - Affected road network
 - National Highways monitoring location
 - Local Authority monitoring location



C01	08/12/23	DCO APPLICATION	BH	CM	HF
REV.	DATE	AMENDMENT DETAILS	ORIG	CHK'D	APP'D
CLIENT					
PURPOSE OF ISSUE					
DCO APPLICATION					
DEVELOPMENT CONSENT ORDER NUMBER					
TR010065					
PROJECT TITLE					
A46 NEWARK BYPASS					
DRAWING TITLE					
Figure 5.6 Air Quality Monitoring Locations					
ORIGINAL SIZE	A3	SCALE	1:30,000		
DRAWING NUMBER	HE 551478	ORIGINATOR	SKAG	VOLUME	EAQ
LOCATION	CONWI_CONW	DR	LA	00010	PROJECT REF NO. HE551478
		TYPE	ROLE	NUMBER	REVISION C01

© Skanska
 This document is issued for the party which commissioned it and for specific purposes connected with the captioned project only. It should not be relied upon by any other party or used for any other purpose.
 We accept no responsibility for the consequences of this document being relied upon by any other party, or being used for any other purpose, or containing any error or omission which is due to an error or omission in data supplied to us by other parties.

